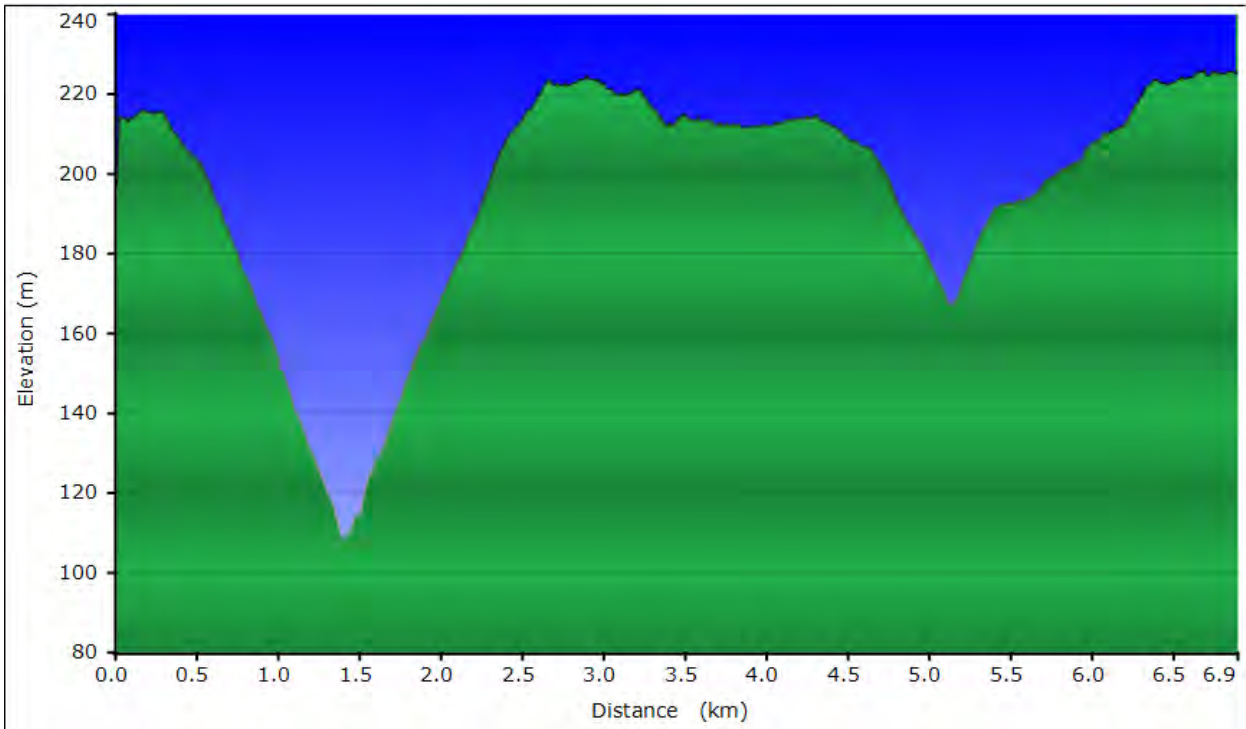


GROENEWEIDE & REDWOOD FOREST

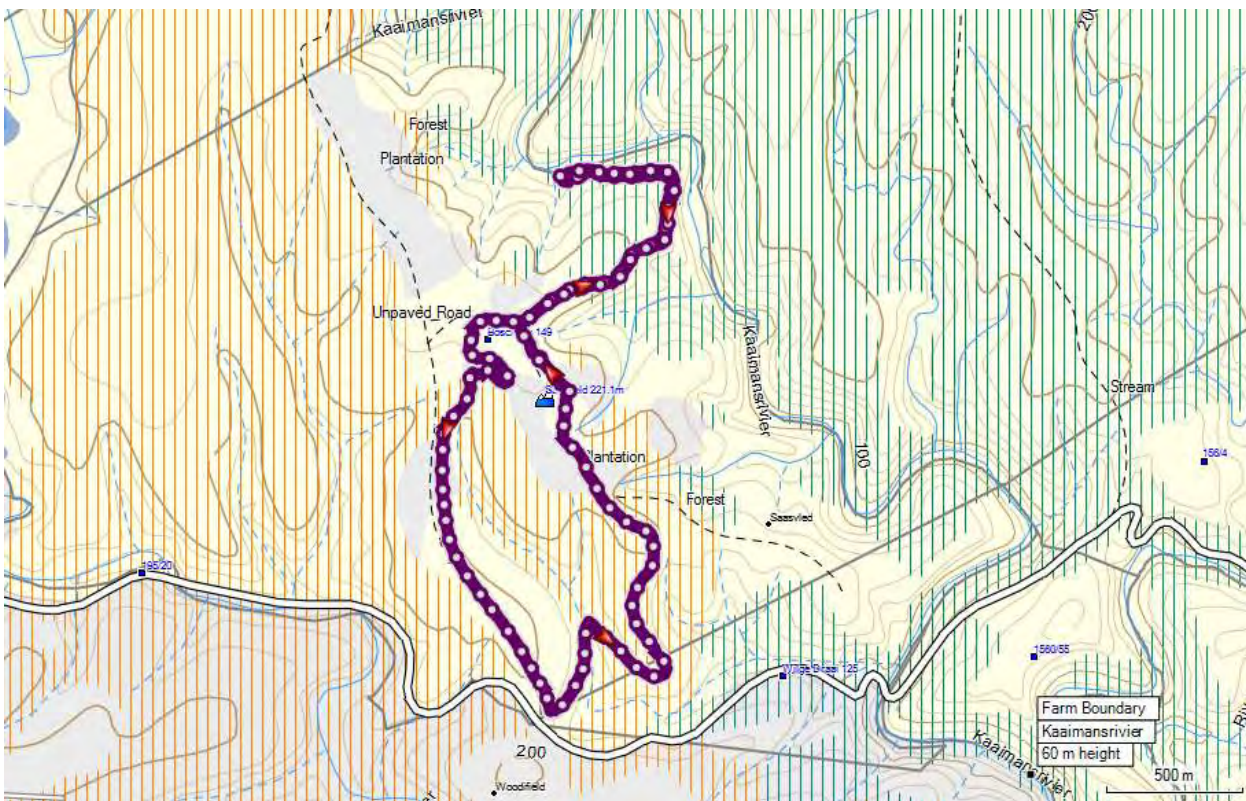
Monday 11 January, 201

Profile: Distance covered: Approx 6.9 Km.

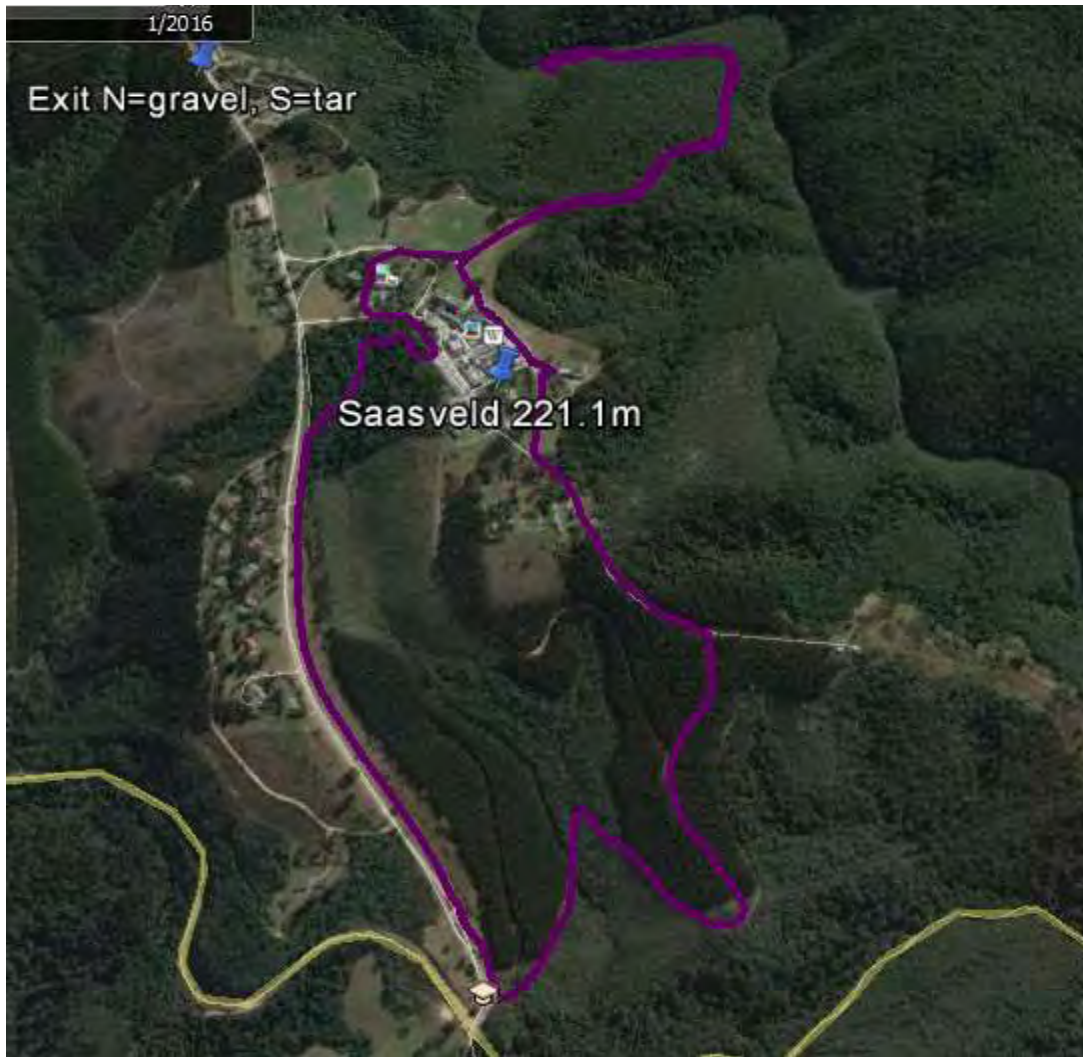
There is a bit of a difference in the 'start', middle (when we crossed the campus) to the 'end' elevations, this due to the accuracy of my GPS varying a bit.



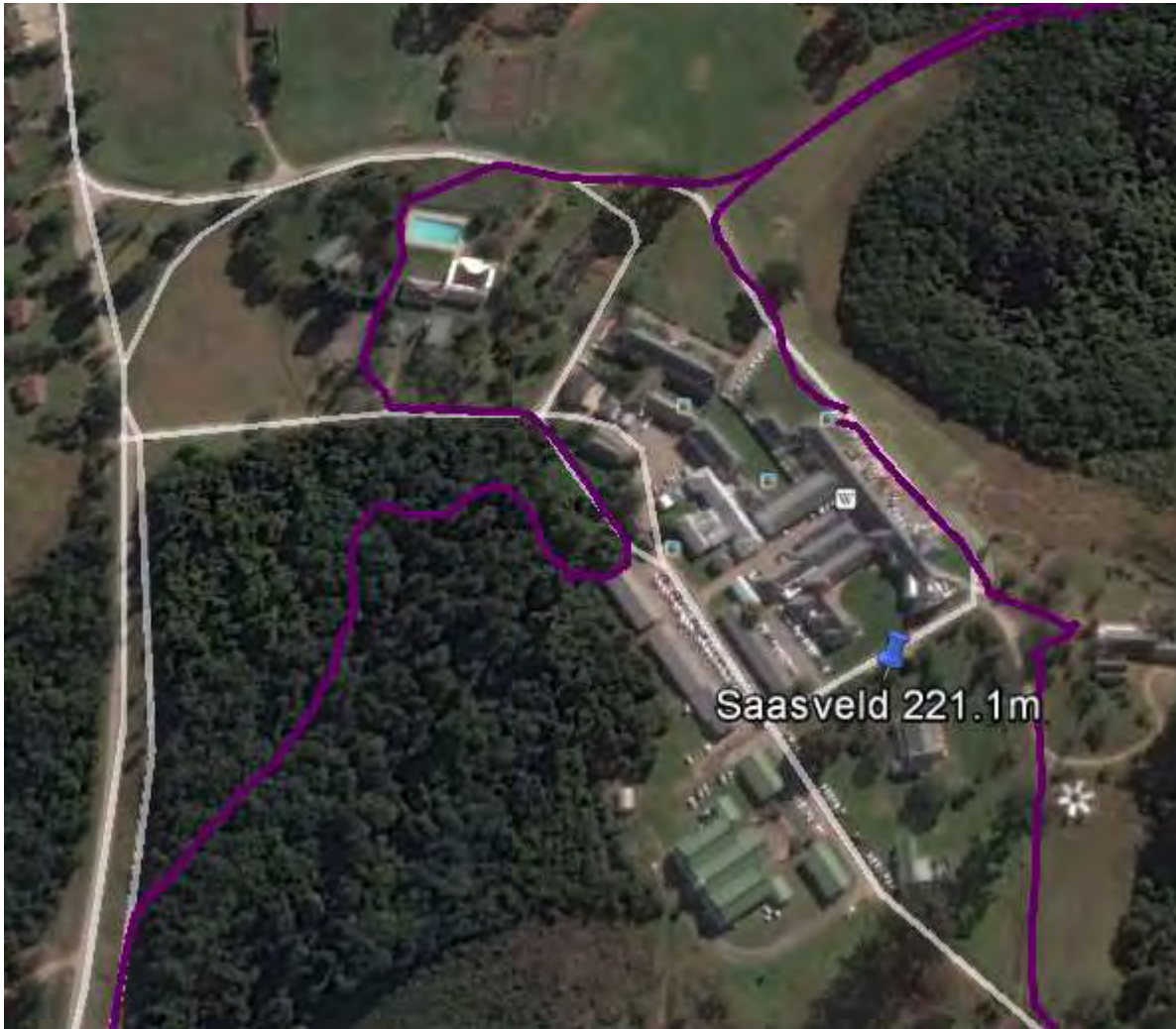
Map: \



Google Earth:



Different scale, showing earlier walks at Saasveld



A bit of detail re location of the Redwood forest

Some Pics:





John looking for a 'dry foot' crossing

Redwoods:



Boardwalk was a student project in 2011



So bietjie 'apartheid'